

# WIN \$4 MILLION

## HINTERLAND HIDEAWAY INCL. GOLD!

**DREAM HOME**  
Art Union

 **Proudly RSL QLD**  
since 1956

Draw 426 | Draw closes: 8pm (AEST) Tue 17 June 2025 | Drawn: 10am (AEST) Wed 25 June 2025 | T&Cs apply



Scan to buy  
your tickets  
today!



TICKETS  
ONLY  
**\$5**



# WIN \$4 MILLION HINTERLAND HIDEAWAY INCL. GOLD!



Imagine living away from it all — but having it all within reach.

A luxury estate in the rolling Gold Coast hills, hidden from the world, but only a short drive down to world-famous beaches, shopping and fun. It's the Hamptons in the Hinterland, an abundance of light and high ceilings, made to entertain in style, with a saltwater pool for summer and cosy fireplace for winter. The expansive view over the acreage of eucalypts brings a natural calm to your everyday. Draw 426 is the tree-change with space-to-breathe that we instinctively seek.

Then life can get even easier with **\$800K GOLD** included, think of the possibilities! Draw 426 is a **\$4 million** dream that's within your reach, for only a **\$5** ticket. Secure yours today.



## PRIZE FEATURES

- ▶ A two-level luxury Hamptons-style home valued at **\$3,000,000** with four-bedrooms, three bathrooms plus two powder rooms.
- ▶ Professionally styled with **\$215,146** worth of premium furniture and appliances.
- ▶ **\$800,000** in gold bullion and possibilities!
- ▶ An estimated rental income of **\$130,000** a year.
- ▶ Space for everything - a triple garage and 6,862sqm of land (1.7 acres).
- ▶ Elegant kitchen and butler's pantry with stone benches, soft-close cabinetry, quality appliances and abundance of storage.
- ▶ A cosy Lopi gas fireplace for winter, and a 10m saltwater pool and sundrenched deck for summer.
- ▶ Dining area crowned by a soaring 5.9m ceiling, with louvred windows to let in the cool breezes.
- ▶ Extra space with a home office and a cinema room with tiered seating.
- ▶ Master suite enjoys hinterland views to the coast, sunny balcony, walk-in robe as well as a luxurious ensuite.
- ▶ Made to entertain with expansive alfresco area with built-in BBQ and sink.
- ▶ Landscaped grounds that co-exist with abundant wildlife and birdlife, featuring enchanting walkways, pond, newly established orchard, cottage gardens, flat and tiered lawns, and charming meadows.
- ▶ Ducted and zoned reverse cycle air-conditioning and ceiling fans that are powered by a 10kW solar system.
- ▶ Electric hot water, town water and Envirocycle septic system.
- ▶ Around 5km to Mudgeeraba Village shops and under 7km to Robina Town Centre.
- ▶ Around 15km to world-famous beaches and Pacific Fair Shopping Centre.

**6,862** SQM LAND

**565** SQM HOUSE

**4** BEDROOMS + STUDY

**3** BATHROOMS + 2 POWDER

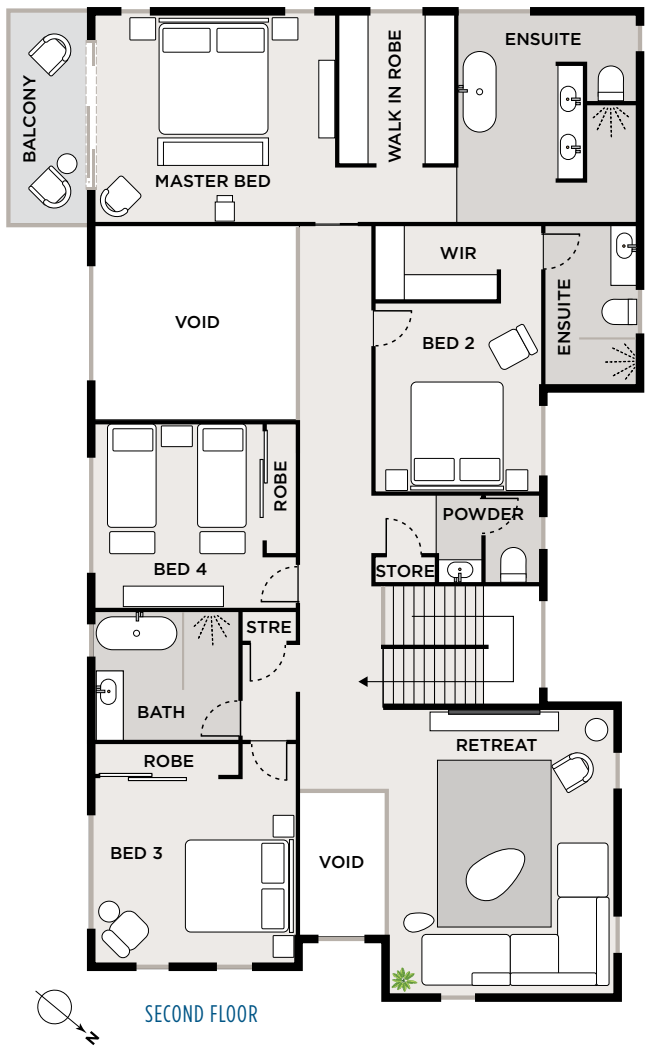
**3** GARAGE SPACES

AIRCON

POOL

SOLAR

SECURITY



TOTAL FURNITURE & ELECTRICAL APPLIANCES **\$215,146**

TOTAL ESTIMATED ANNUAL RENTAL RETURN **\$130,000**

Includes **\$800K** Gold

12a Duke Court, Tallai QLD 4213

Homes are not open for inspection

**DON'T MISS YOUR CHANCE TO WIN! SECURE YOUR TICKETS FOR DRAW 426 NOW!**  
Visit **dreamhomeartunion.com.au** or call **1300 775 888**



**VIPs COULD WIN OVER \$65M IN 2025!**

You're missing out on extra chances to win! Guarantee your tickets in every prize home lottery, plus much more!



**dreamhomeartunion.com.au/vip-club**